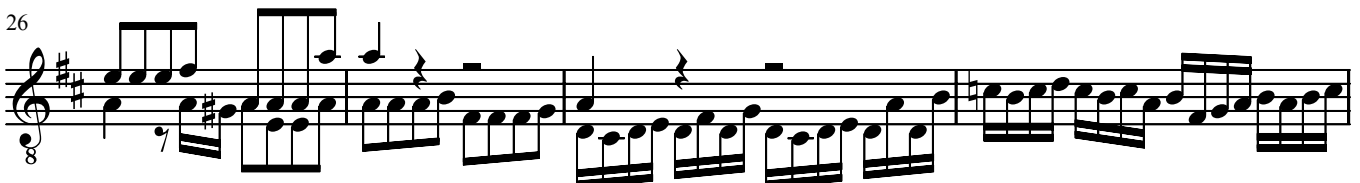
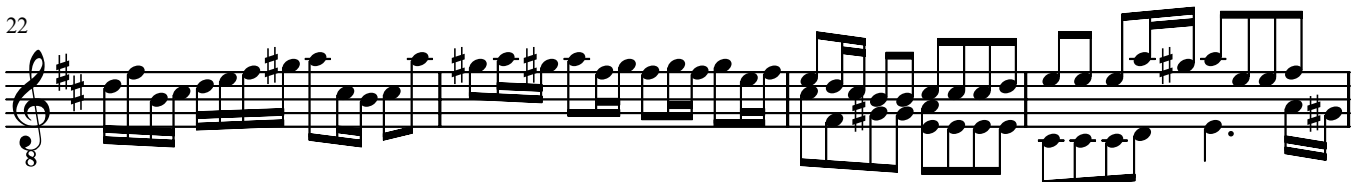
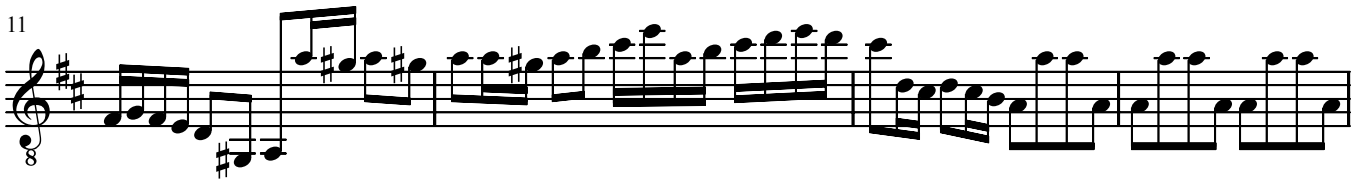


Guitar 3

Brandenburg Concerto No. 3

First Movement

J.S. Bach



33

Musical staff 33, starting with a treble clef, a key signature of two sharps (F# and C#), and a common time signature (C). The staff contains a continuous eighth-note melody.

36

Musical staff 36, continuing the melody with some rests and eighth-note patterns.

40

Musical staff 40, featuring a mix of eighth and sixteenth notes.

43

Musical staff 43, showing a continuation of the eighth-note melody.

47

Musical staff 47, with some rests and eighth-note patterns.

51

Musical staff 51, featuring a mix of eighth and sixteenth notes.

55

Musical staff 55, continuing the eighth-note melody.

59

Musical staff 59, with some rests and eighth-note patterns.

63

Musical staff 63, ending with a double bar line and a fermata. A '2' is written below the staff, indicating a second ending.

66



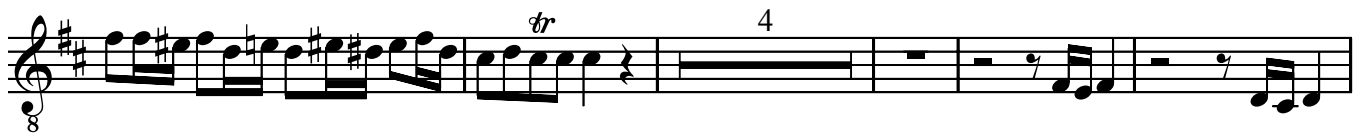
69



72



77



86



90



94



99



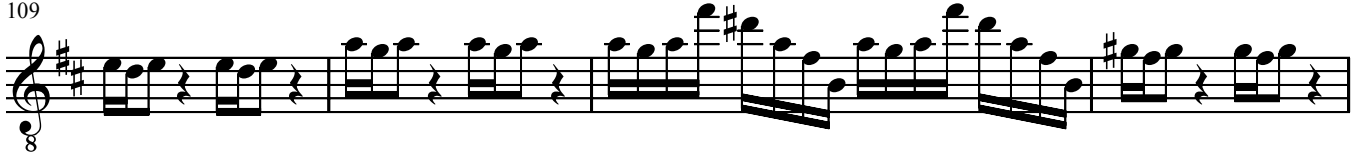
103



106



109



113



117



121



125



129



134

